

# In the Garden

## Activities + Lessons for 3rd Grade

### Arizona Life Science Standards:

3.L1U1.5 - Develop and use models to explain that plants have internal and external structures that serve various functions that aid in growth, survival, behavior, and reproduction

### Essential Question

How do plants protect themselves?

### Introduction

Plants have internal and external characteristics that help them to better grow, survive, and reproduce. For their first line of defense, many plants have hard shells, thorns, pricklys, or sticky sap that keeps away predators.

### Objectives

- Students will identify the external structures of a plant (roots, stems, leaves, flowers)
- Students will learn ways that plants protect themselves

### Pre-Trip Activities

- Plant Structures and Their Functions Lesson: <https://www.education.com/lesson-plan/plant-structures-and-their-functions/>
- Plants with Weapons! Video: [https://www.youtube.com/watch?v=wu\\_9tIK4DWo](https://www.youtube.com/watch?v=wu_9tIK4DWo)
- Plant Defenses Overview: [https://www.ducksters.com/science/biology/plant\\_defenses.php](https://www.ducksters.com/science/biology/plant_defenses.php)
- Meat Eating Plants Video: [https://www.youtube.com/watch?v=6L\\_p3ZkSILo](https://www.youtube.com/watch?v=6L_p3ZkSILo)

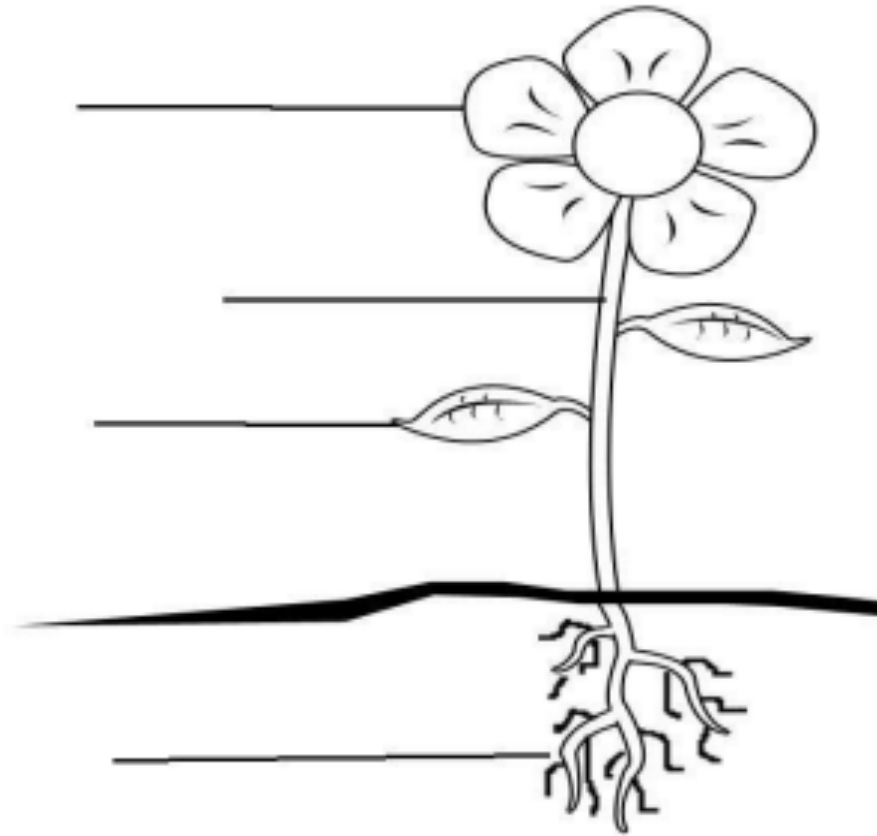
### Echoing Hope Ranch Activities

- Examining External Structures
- Planting a Seed to Take Home

### Post-Trip Activities

- That's Not a Plant, It's a Weed! Activity: [https://betterlesson.com/lesson/603965/that-s-not-a-plant-it-s-a-weed-discovering-functions-of-external-plant-parts-what-makes-a-plant-a-plant?from=cc\\_lesson](https://betterlesson.com/lesson/603965/that-s-not-a-plant-it-s-a-weed-discovering-functions-of-external-plant-parts-what-makes-a-plant-a-plant?from=cc_lesson)

**Label the parts of the plant.**



1. The \_\_\_\_\_ attracts pollinators and make seeds that will someday grow into new plants.
2. The \_\_\_\_\_ supports the plant and carries water, nutrients, and plant chemicals up and down to all parts of the plant.
3. The \_\_\_\_\_ have little openings that let air and water come and go. They also catch energy from sunlight and use it to turn the air and water into food.
4. The \_\_\_\_\_ are hidden underground, but are very important to the plant. They also suck up water and nutrients from the soil and even store food for the future.